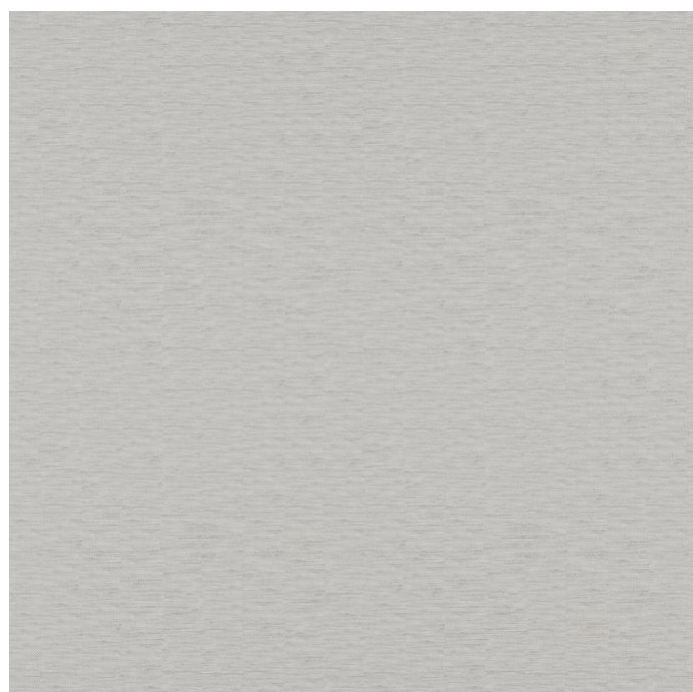




Allusion 10248-108

Zepel



<b>Colour</b>	Limestone	<b>Composition</b>	54% LI, 32% CO, 14% PL	<b>Martindale</b>	-
<b>Status</b>	Active	<b>Width</b>	300cm / 118.1"	<b>Wyzenbeek</b>	-
<b>Brand</b>	Zepel	<b>Weight</b>	311.0g/m / 284g/yd	<b>Colourfastness</b>	UV 4.5/8 Blue Scale
<b>Collection</b>	-	<b>Horizontal Repeat</b>	None / None	<b>Fire Retardancy</b>	AS 1530.3
<b>Country of Origin</b>	India	<b>Vertical Repeat</b>	None / None	<b>Environmental</b>	Oekotex 100
<b>Finishes</b>	-				

### Care Instructions

- Do not bleach
  - Do not tumble dry
  - Drip dry in shade
  - Drycleaning Gentle cycle
  - Machine wash cool gentle cycle
  - Med Iron max 150C
- Iron reverse side use barrier cloth

### Usage

- Drapery Sheer

### Attributes

- Multi Directional
- Fire Retardant
- Eco/Green

### Notes

R.H.W.O.T.

Puddling Drape Recommended

Allusion is also available in Aqua, Blossom, Bonbon, Buff, Cafe, Cascade, Cookie, Cream, Day Break Stk19, Feather, Fern, Fossil, Gargoyle, Linen, Liquorice, Marzipan, Mushroom, Nougat, Nut, Papyrus, Parma, Pearl, Pistachio, Putty, Rattan, Seagrass, Sesame, Silver, Sky, Snow, Stucco, Sunflower.

Generated Sun, 21 Jun 2020 00:22:23.