

Ledbury 10437

Zepel FibreGuard Pro

Status	Indent	Composition	100% PL (PES)	Martindale	35,000 Martindale Cycles
Brand	<u>Zepel FibreGuard Pro</u>	Width	138cm / 54.3"	Wyzenbeek	70,000 Wyzenbeek Double Rubs
Collection	Michelin	Weight	716.2g/m / 654g/yd	Colourfastness	UV 4-5/8 Blue Scale
Country of Origin	TURKEY	Horizontal Repeat	3.7cm / 1.5"	Fire Retardancy	NFPA 260 - Class 1, CAL 117, MVSS 302, AS 1530.3
Finishes	Anti Bacterial, Anti Mildew, Healthcare Finish	Vertical Repeat	3.9cm / 1.5"	Environmental	Oekotex 100

Care Instructions

Do not bleach	Do not tumble dry	Drip dry in shade
Drycleaning Gentle cycle	Low iron max 110C	Machine wash cool gentle cycle

Usage

Upholstery Medium Duty	Accessory
------------------------	-----------

Attributes

Multi Directional Fibreguard Pro	Washable	Stain Resistant
-------------------------------------	----------	-----------------

Colours



Amber

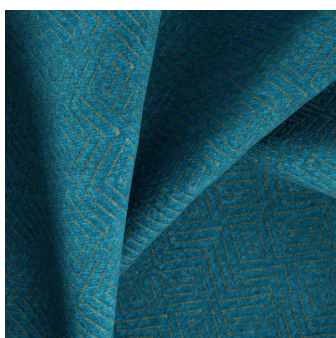
Ivory

Limestone

Mineral

Porto

Silver



Teal