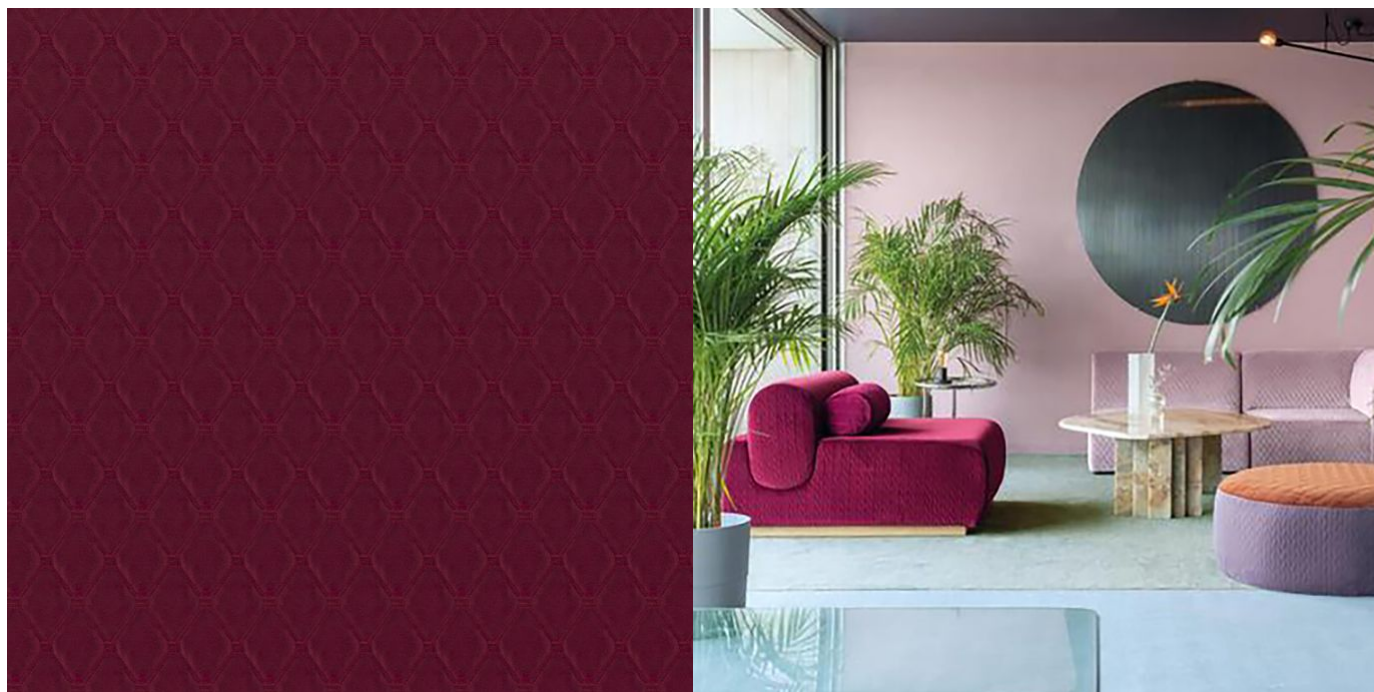




Tia 10447-106
Zepel Fibreguard





Colour	Tulip	Composition	100% PL (PES)	Martindale	40,000 Martindale Cycles
Status	Indent	Width	138cm / 54.3"	Wyzenbeek	-
Brand	Zepel Fibreguard	Weight	1108.1g/m / 1013g/ yd	Colourfastness	UV 4/8 Blue Scale
Collection	Quilvet	Horizontal Repeat	6.8cm / 2.7"	Fire Retardancy	CAL 117, NFPA 260 - Class 1, NFPA 701, BS 5852
Country of Origin	China	Vertical Repeat	9cm / 3.5"	Environmental	Oekotex 100
Finishes	-				


Care Instructions


 Do not bleach

 Do not dryclean

 Do not tumble dry

 Drip dry in shade

 Low iron max 110C

 Machine wash cool gentle cycle

See reverse side Warning: Iron reverse side use barrier cloth

Usage

 Upholstery Heavy Duty

 Accessory

Attributes

 Eco/Green

Stain Resistant

Fibreguard

Tia is also available in Cement, Dragonfly, Dune, Nautical.

Generated Sun, 21 Jun 2020 11:20:18.