

Tia 10447  
Zepel Fibreguard

<b>Status</b>	Indent	<b>Composition</b>	100% PL (PES)	<b>Martindale</b>	40,000 Martindale Cycles
<b>Brand</b>	Zepel Fibreguard	<b>Width</b>	138cm / 54.3"	<b>Wyzenbeek</b>	—
<b>Collection</b>	Quilvet	<b>Weight</b>	1108.1g/m / 1013g/ yd	<b>Colourfastness</b>	UV 4/8 Blue Scale
<b>Country of Origin</b>	China	<b>Horizontal Repeat</b>	6.8cm / 2.7"	<b>Fire Retardancy</b>	CAL 117, NFPA 260 - Class 1, NFPA 701, BS 5852
<b>Finishes</b>	'—'	<b>Vertical Repeat</b>	9cm / 3.5"	<b>Environmental</b>	Oekotex 100

Care Instructions

- Do not bleach
  - Do not dryclean
  - Do not tumble dry
  - Drip dry in shade
  - Low iron max 110C
  - Machine wash cool gentle cycle
- Warning: Iron reverse side use barrier cloth

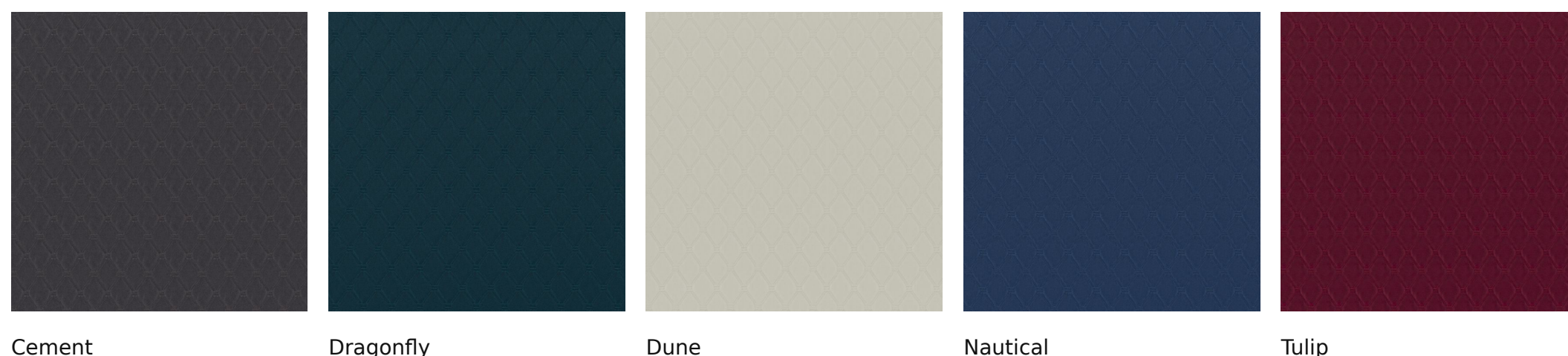
Usage

- Upholstery Heavy Duty
- Accessory

Attributes

- Eco/Green
- Stain Resistant
- Fibreguard

Colours



Cement                      Dragonfly                      Dune                      Nautical                      Tulip