







# Selene 10477


## Zepel

Status	Active	Composition	100% PL,	Martindale	—
Brand	Zepel	Width	298cm / 117.3"	Wyzenbeek	—
Collection	—	Weight	126.0g/m / 115g/yd	Colourfastness	UV 4/8 Blue Scale
Country of Origin	TURKEY	Horizontal Repeat	None / None	Fire Retardancy	AS 1530.2, AS 1530.3
Finishes	—	Vertical Repeat	None / None	Environmental	Oekotex 100


### Care Instructions

 Do not bleach	 Do not tumble dry	 Drip dry in shade
 Drycleaning Gentle cycle	 Low iron max 110C	 Machine wash cool gentle cycle

### Usage

 Sheer Curtains

### Attributes

 Weighted  Use Fabric Continuous

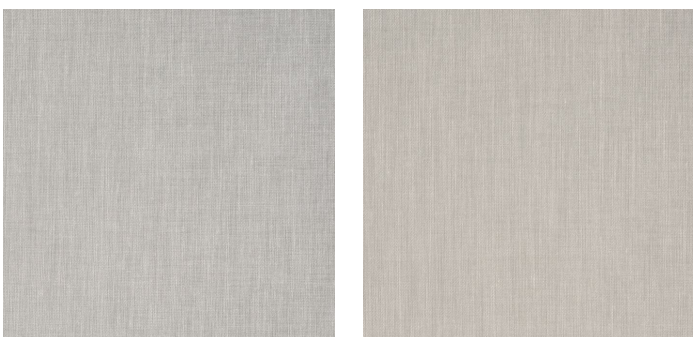
### Notes

R.H.W.O.T. Drapery Samp Shown Continuous

### Colours



Calico      Cotton      Ebony      Flax      Linen      Slate



String      Wool