



Stripia 14925

Zepel

Status	Indent	Composition	66% PL, 34% CO	Martindale	—
Brand	<u>Zepel</u>	Width	139cm / 54.7"	Wyzenbeek	—
Collection	Stripia	Weight	376.7g/m / 344g/yd	Colourfastness	UV 5/8 Blue Scale
Country of Origin	INDIA	Horizontal Repeat	34.70cm / 13.7"	Fire Retardancy	CAL 117, NFPA 260 - Class 1
Finishes	Calandered	Vertical Repeat	34.50cm / 13.6"	Environmental	Oekotex 100

Care Instructions

Do not bleach	Drycleaning Gentle cycle	Low iron max 110C
Machine wash hot	Tumble dry gentle cycle	

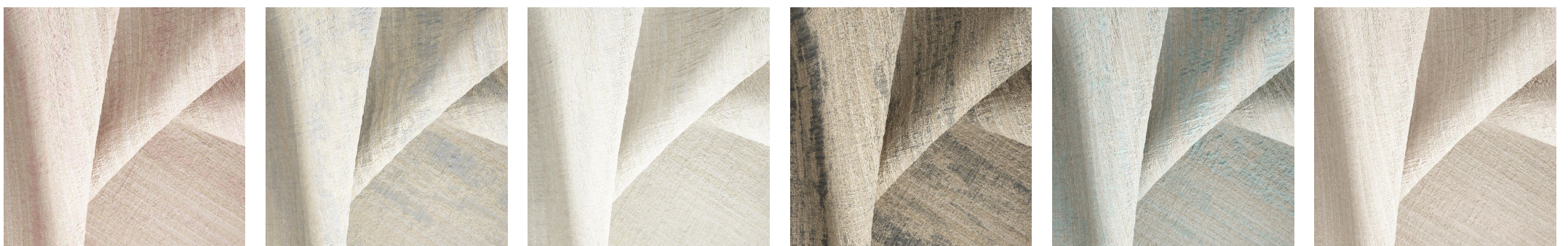
Usage

Curtains	Accessory	Top of Bed
----------	-----------	------------

Attributes

Eco/Green	Washable 60C
-----------	--------------

Colours



Blossom

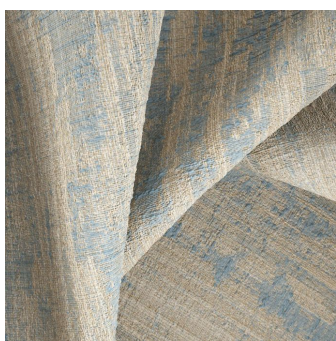
Gull

Mist

Plaza

Pool

Sand



Sky