





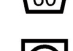
Umbra 14929-100

Zepel

Specifications

| | |
|-------------------|------------------------------|
| Colour | Denim |
| Brand | <u>Zepel</u> |
| Collection | Eclipse |
| Origin | Asia |
| Composition | 100% PL |
| Width | 300cm / 118.1" |
| Weight | 1050.0g/m / 960g/yd |
| Horizontal Repeat | 54.50cm / 21.5" |
| Vertical Repeat | 49.00cm / 19.3" |
| Martindale | - |
| Status | Indent |
| Wyzenbeek | - |
| Colourfastness | UV 4/8 Blue Scale |
| Fire Retardancy | AS 1530.3, CAL 117, NFPA 701 |
| Environmental | Oekotex 100 |
| Finishes | - |


Care Instructions

-  Do not bleach
-  Drycleaning Gentle cycle
-  Low iron max 110C
-  Machine wash hot
-  Tumble dry gentle cycle

Usage

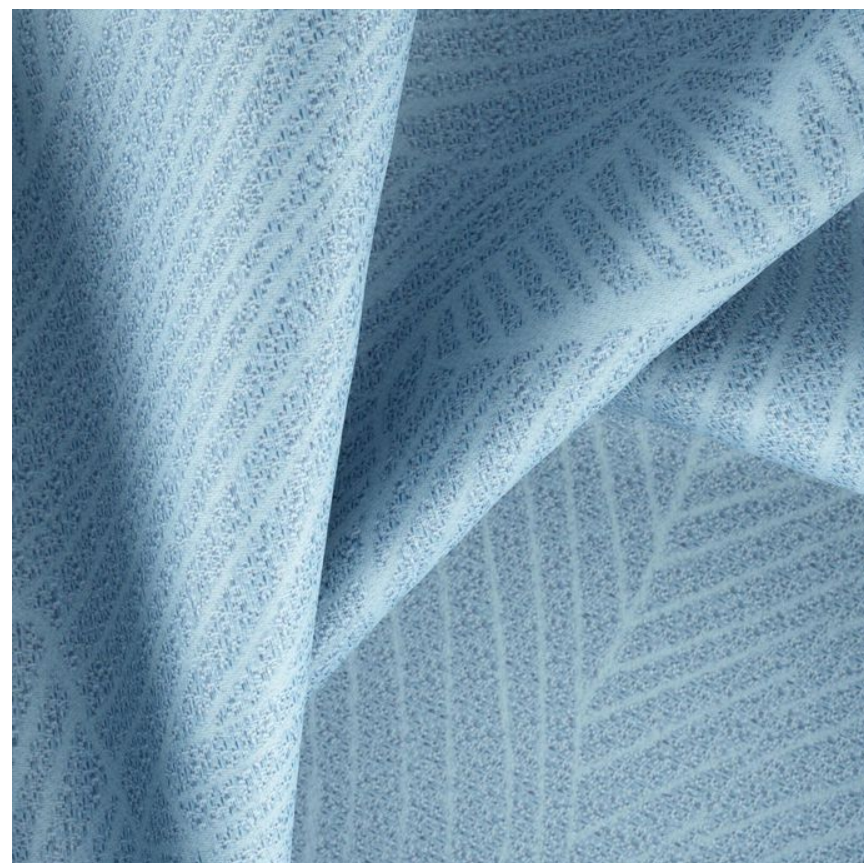
-  Curtains
-  Accessory
-  Top of Bed

Attributes

-  Eco/Green
- Washable 60C

Notes

Folded Half Width On Core



Floor To Ceiling Sliding Doors

Description Roomshot

