

Pia 19871

Zepel FibreGuard

Status	Indent	Composition	100% PL (PES)	Martindale	40,000 Martindale Cycles
Brand	<u>Zepel FibreGuard</u>	Width	138cm / 54.3"	Wyzenbeek	—
Collection	Quilvet	Weight	803.0g/m / 734g/yd	Colourfastness	UV 4/8 Blue Scale
Country of Origin	Asia	Horizontal Repeat	3.30cm / 1.3"	Fire Retardancy	NFPA 260 - Class 1, CAL 117, BS 5852, FMVSS 302
Finishes	—	Vertical Repeat	5.50cm / 2.2"	Environmental	Oekotex 100

Care Instructions

Do not bleach	Do not dryclean	Do not tumble dry
Drip dry in shade	Low iron max 110C	Machine wash cool gentle cycle
<small>Iron reverse side use barrier cloth</small>		

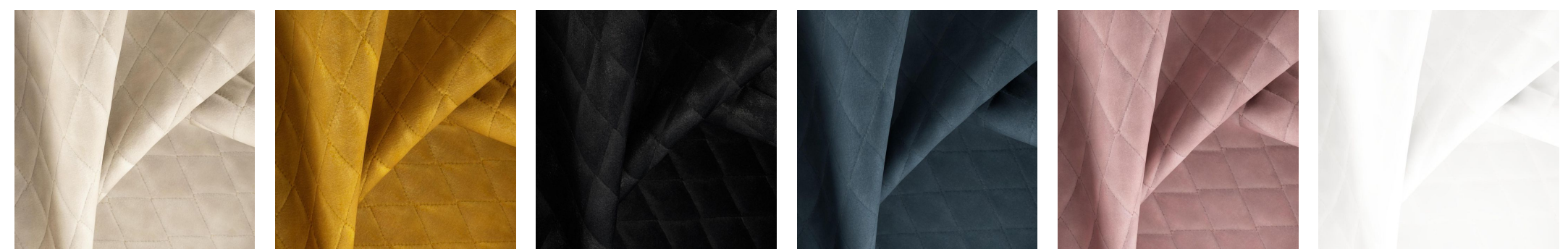
Usage

Upholstery Heavy Duty	Accessory
-----------------------	-----------

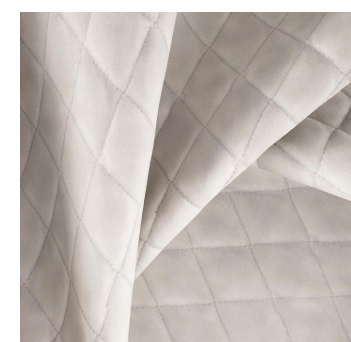
Attributes

Eco/Green	Stain Resistant	Fibreguard
-----------	-----------------	------------

Colours



Almond Amber Limo Ocean Powder Pure



Rabbit