







Coba 2843 * 53026

Christian Fischbacher

| | | | | | |
|--------------------------|-----------------------|--------------------------|---|------------------------|-------------------|
| Status | Indent | Composition | 69% PC (PAN), 12% PL (PES), 10% CO, 9% LI | Martindale | — |
| Brand | Christian Fischbacher | Width | 315cm / 124.0" | Wyzenbeek | — |
| Collection | March Release | Weight | 1000.0g/m / 914g/yd | Colourfastness | UV 5/8 Blue Scale |
| Country of Origin | ITALY | Horizontal Repeat | None / None | Fire Retardancy | — |
| Finishes | — | Vertical Repeat | None / None | Environmental | — |

Care Instructions

-  Do not bleach
 -  Do not dryclean
 -  Do not tumble dry
 -  Drip dry in shade
 -  Low iron max 110C
 -  Machine wash cool gentle cycle
- Iron reverse side use barrier cloth

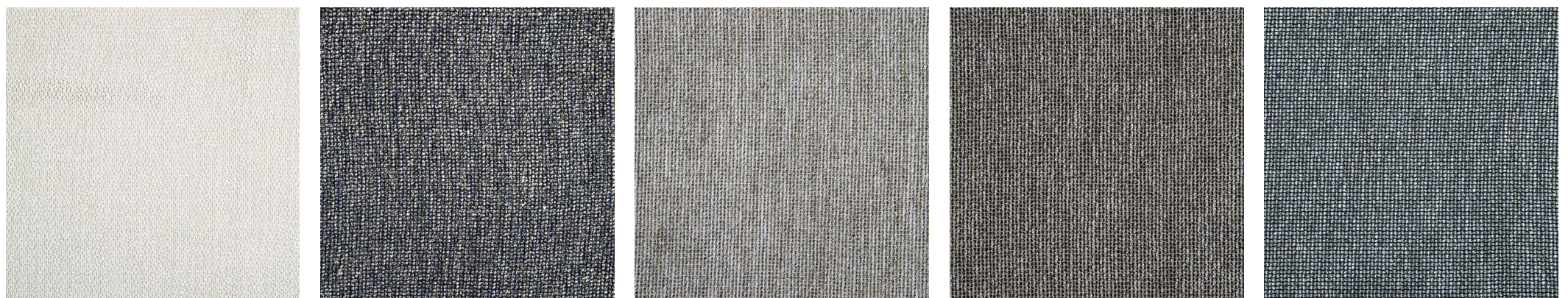
Usage

-  Curtains

Attributes

Use Fabric Continuous

Colours



300 301 305 307 315